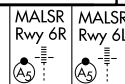


ILS or LOC RWY 6R

LOS ANGELES INTL (LAX)

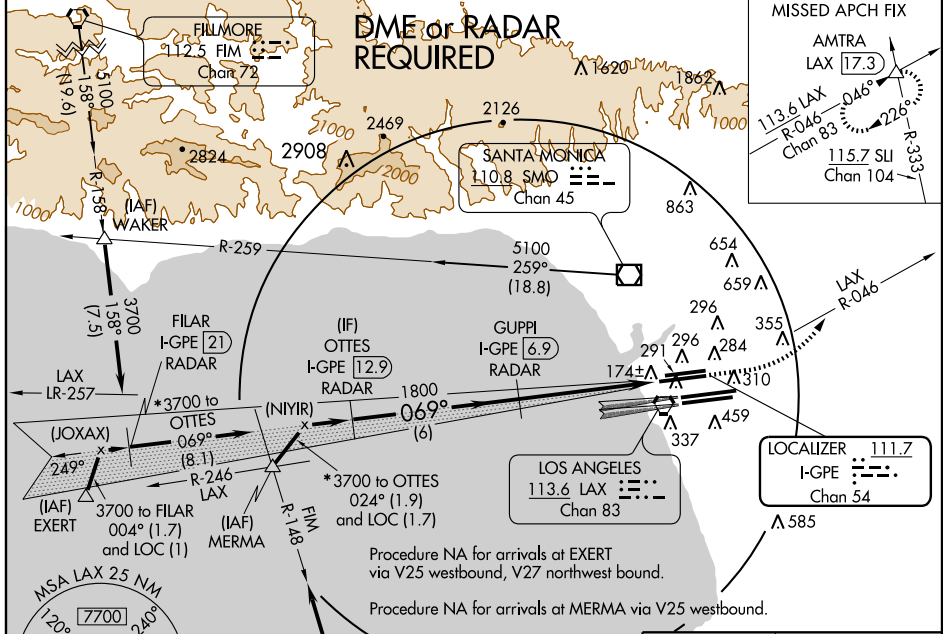
LOC/DME I-GPE 111.7 Chan 54	APP CRS 069°	Rwy Idg 6R 9954 TDZE 114 Apt Elev 126	Rwy Idg 6L 8925 TDZE 117 Apt Elev 126
---	------------------------	--	--

▼ Inoperative table does not apply to Sidestep Rwy 6L Cats A and B.
Simultaneous approach authorized with Rwy 7L/R.
LOC procedure NA during simultaneous operations.



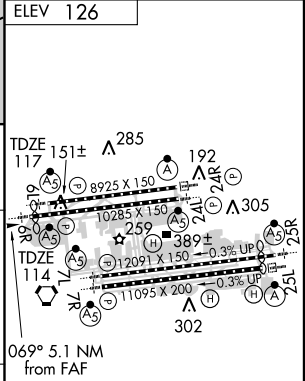
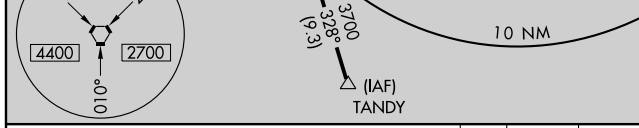
MISSED APPROACH: Climb to 600 then climbing left turn to 3000 via LAX VORTAC R-046 to AMTRA INT/LAX 17.3 DME and hold.

ATIS ARR 133.8 DEP 135.65	124.3 363.2 (APCH FM WEST) 124.5 235.975 (225°-044°)	SOCAL APP CON 124.9 269.0 (090°-224°) 128.5 360.7 (045°-089°)	LOS ANGELES TOWER N 133.9 239.3 S 120.95 379.1	GND CON N 121.65 327.0 S 121.75 327.0	CLNC DEL 121.4 327.0
---	---	---	--	---	--------------------------------



SW-3, 27 AUG 2009 to 24 SEP 2009

SW-3, 27 AUG 2009 to 24 SEP 2009



CATEGORY	A	B	C	D
S-ILS 6R		314/18	200 (200-½)	
S-LOC 6R		460/24	346 (400-½)	460/40 346 (400-¾)
SIDESTEP RWY 6L		460/50	343 (400-1)	460-1½ 343 (400-1½)

TDZ/CL Rwy 6R, 7L, 24R, and 25L	HIRL all Rwy				
FAF to MAP 5.1 NM					
Knots	60	90	120	150	180
Min:Sec	5:06	3:24	2:33	2:02	1:42